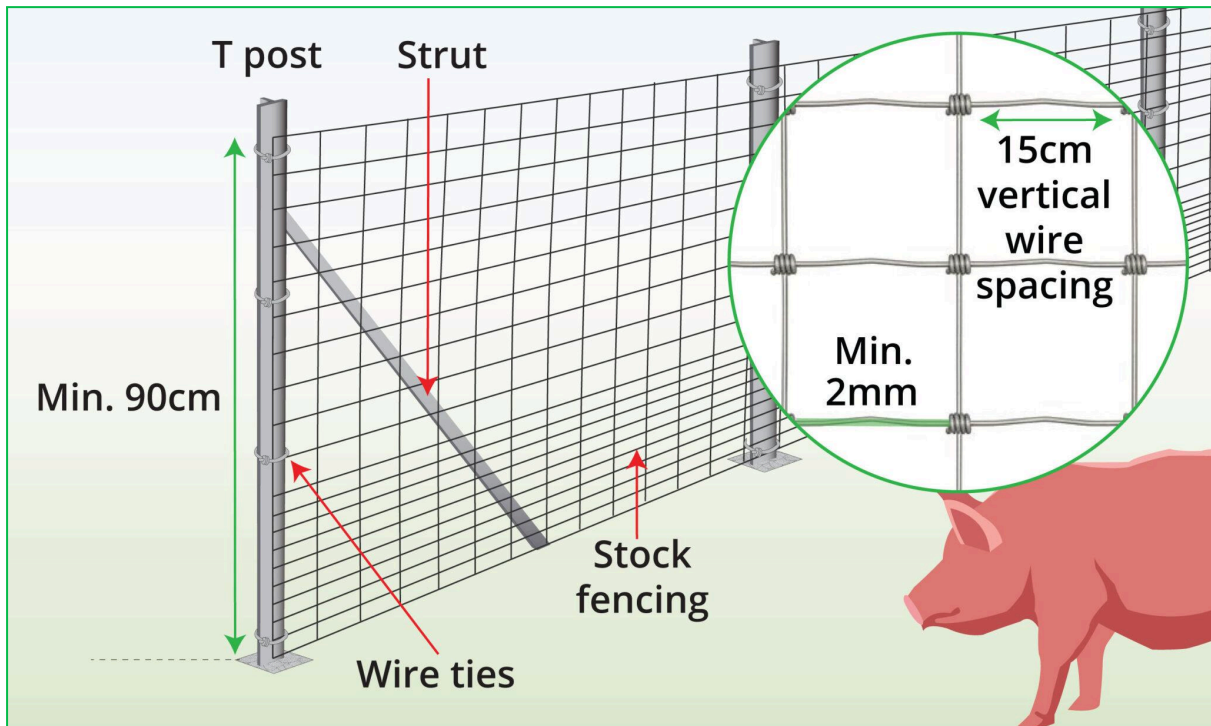


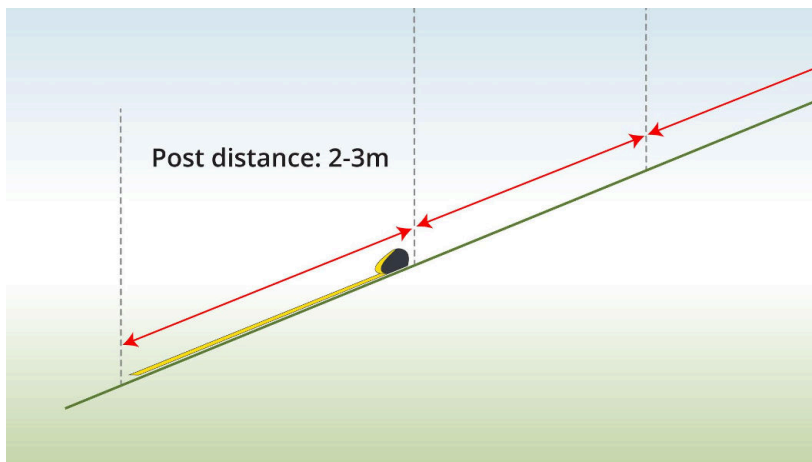
## PIG FENCE INSTALLATION

With Stock Fencing and T Posts

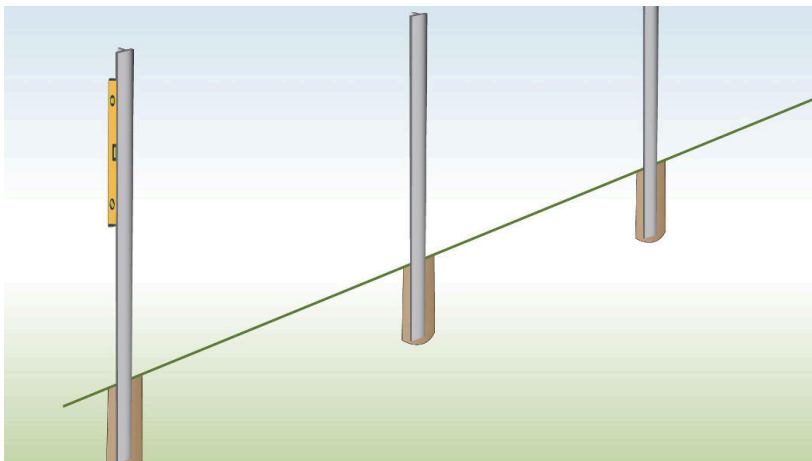


### THINGS YOU'LL NEED

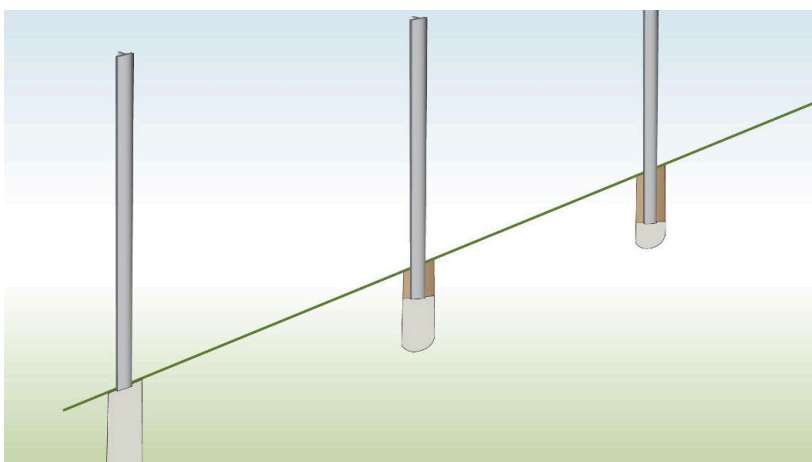
- [Pig fence](#)
- [T posts](#)
- [Reinforcement Struts](#)
- [Bolts & Nuts](#)
- Wire ties
- Post driver
- Level
- Tape measure
- Cement

**INSTRUCTIONS****Step 1: Measure Post Distance**

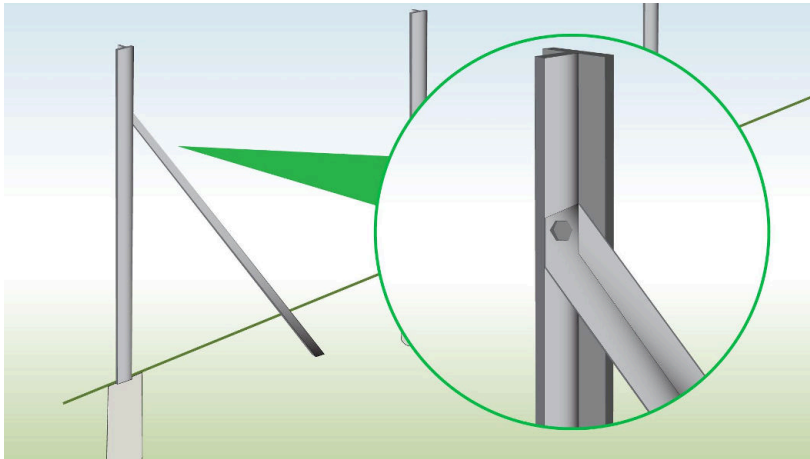
Measure and mark the post positions, spacing them 2–3 m apart.

**Step 2: Dig Holes**

Dig the holes and place the posts inside, keeping them aligned with the flat sides facing outwards.

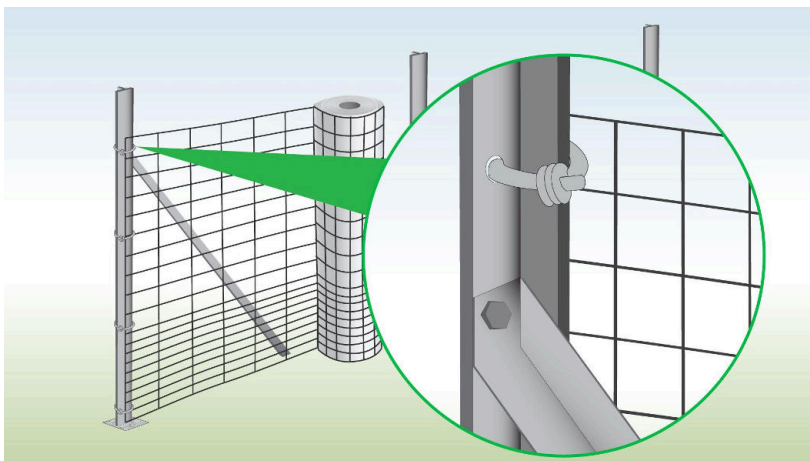
**Step 3: Set Posts in Concrete**

Secure the posts with concrete to ensure they are stable.



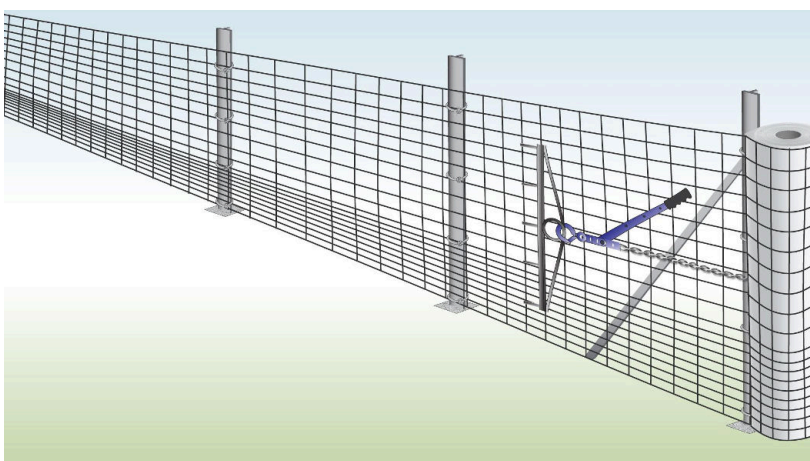
**Step 4: Install Reinforcement Struts**

Attach the reinforcement strut by aligning its hole with the second hole from the top of the T post.



**Step 5: Secure Fencing to First Post**

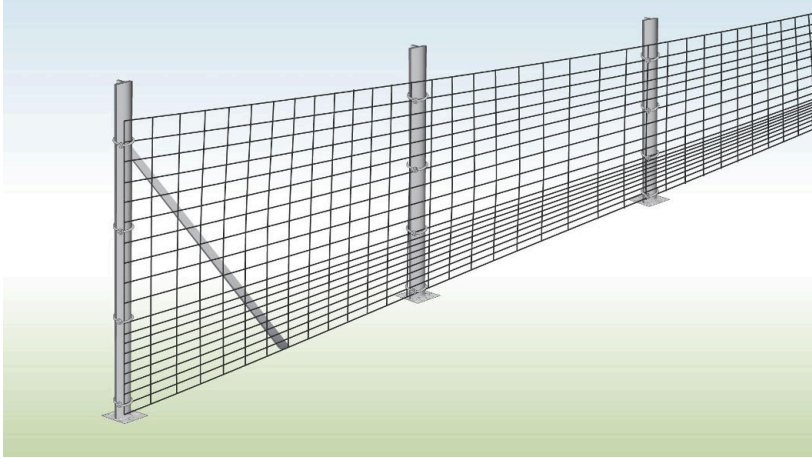
Attach the fence to the first end post using wire ties.



**Step 6: Stretch It Tight**

Unroll the fence to the other end, keeping it tight between the end posts.

Cut any excess, secure it to the end post as before, and then release the tension.



### **Step 7: Secure to Middle Posts**

Finally, go along the fence and fasten it to the middle posts using the same wire ties.