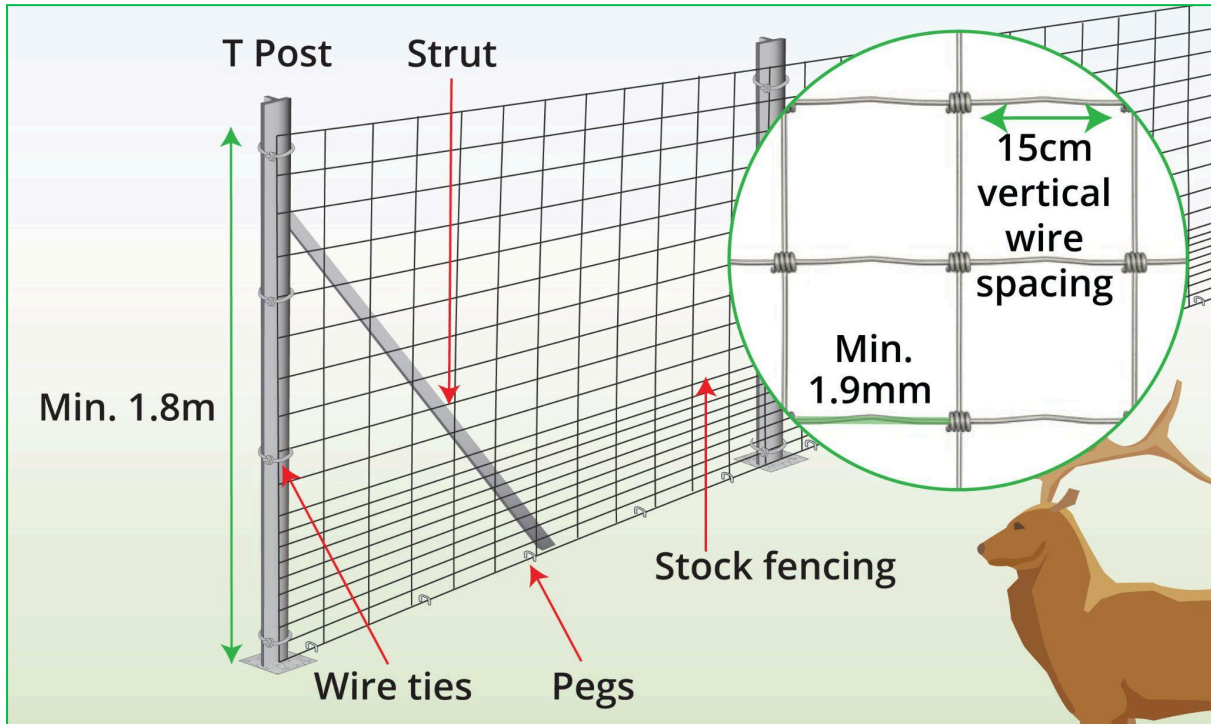
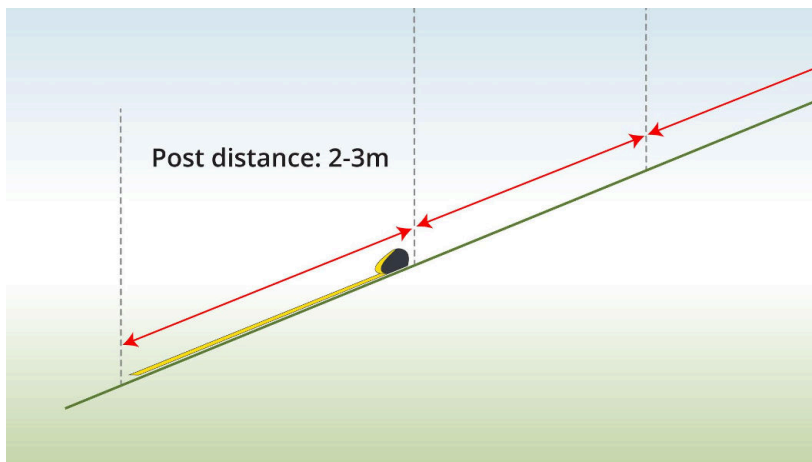


## DEER FENCE INSTALLATION With Stock Fencing

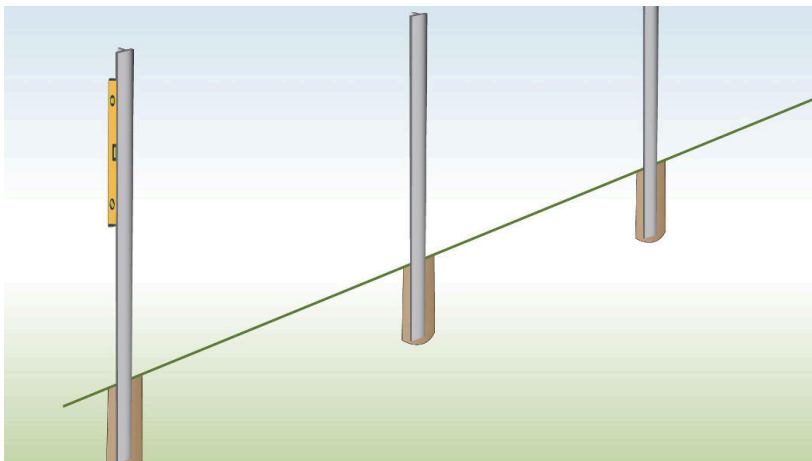


### THINGS YOU'LL NEED

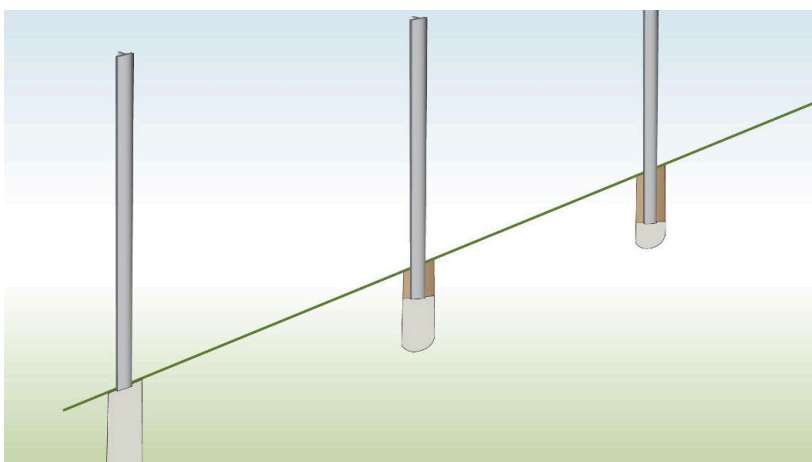
- Deer fencing
- T posts
- Reinforcement Struts
- Bolts & Nuts
- Pegs
- Wire ties
- Post driver
- Level
- Tape measure
- Cement

**INSTRUCTIONS****Step 1: Measure Distance between Posts**

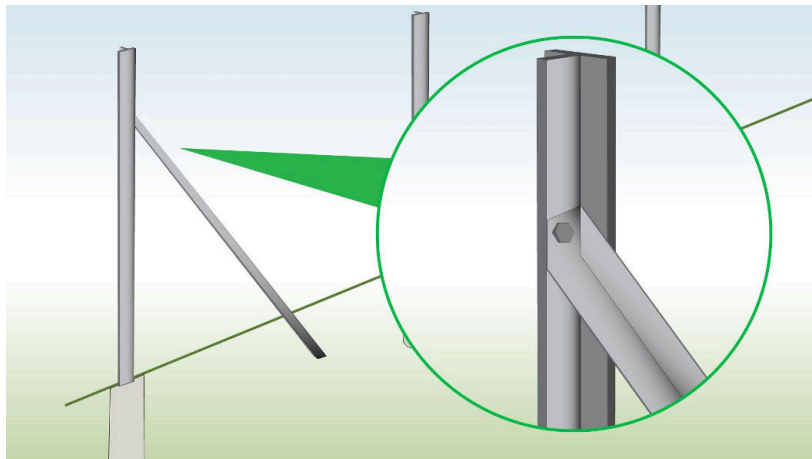
Mark where the posts will go, leaving about 2-3 m between them.

**Step 2: Dig the Holes**

Dig the holes and put the posts in place, keeping the flat sides facing outwards.

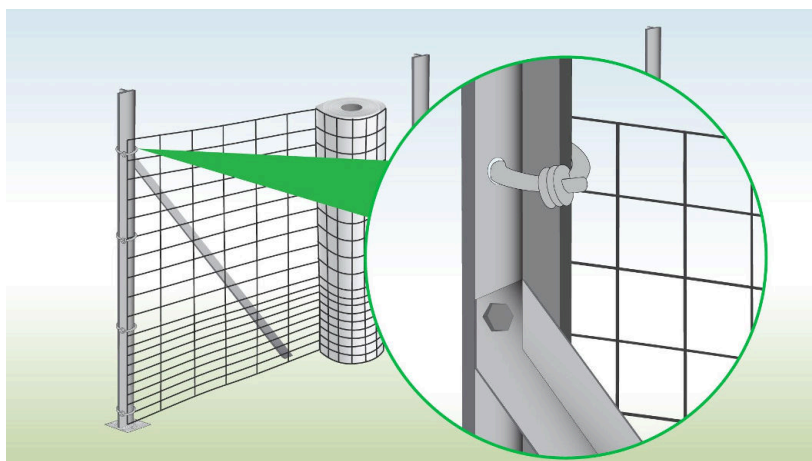
**Step 3: Set Them in Concrete**

Set the posts in concrete so they stay steady.



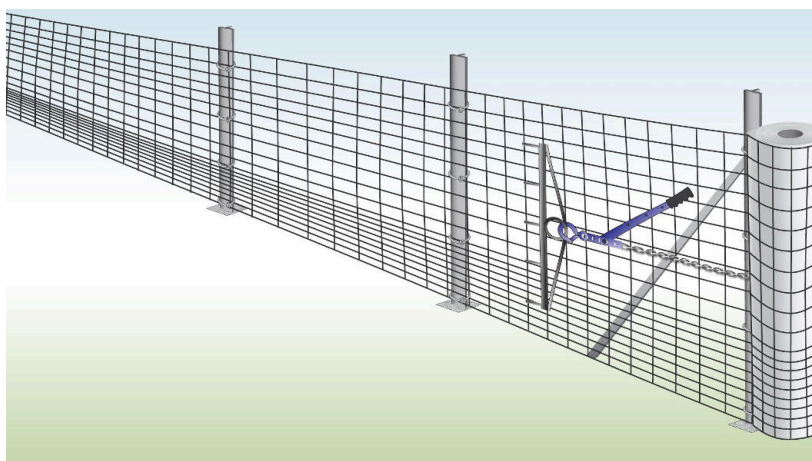
#### **Step 4: Install Reinforcement Struts**

Fit the reinforcement strut by matching its hole with the second hole from the top of the T post.



#### **Step 5: Secure Fencing to Post**

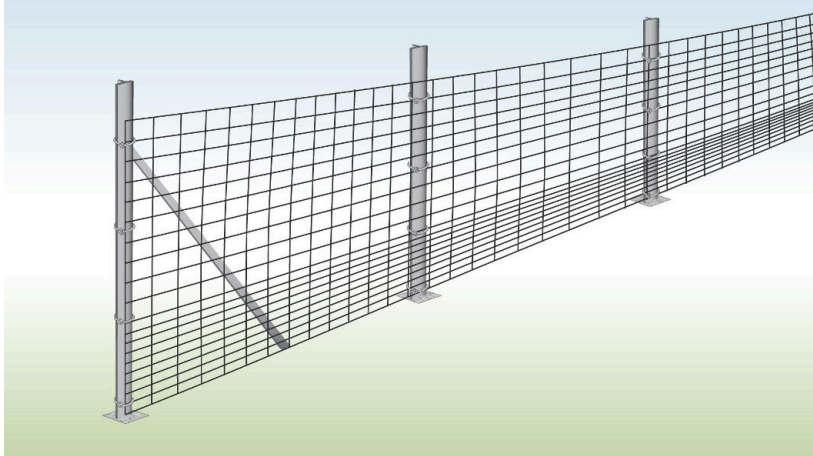
Secure the stock fencing to the first post using wire ties.



#### **Step 6: Pull It Tight**

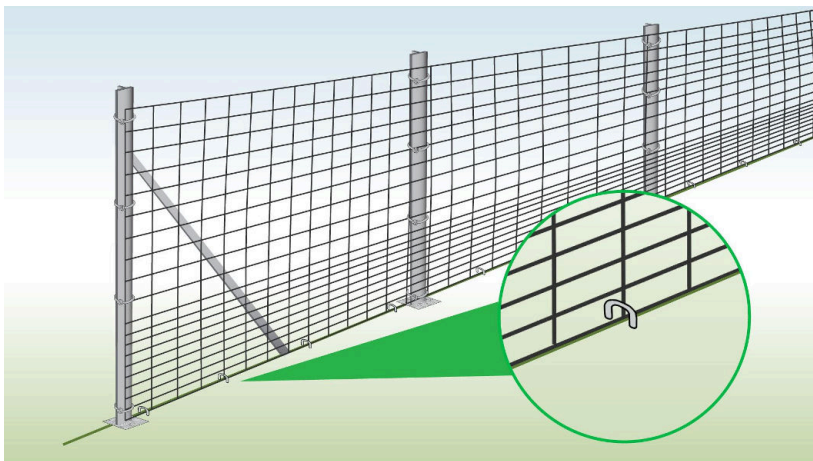
Unroll it to the other end, keeping it tight between the two end posts.

Cut off any extra fencing, and attach it to the post in the same way as before, then release the tension.



### **Step 7: Secure to Middle Posts**

Fasten the fence to the middle posts using wire ties.



### **Step 8: Secure to Ground with Pegs**

Finally, peg the bottom of the fence to the ground every 1-2 m to stop deers from pushing underneath.