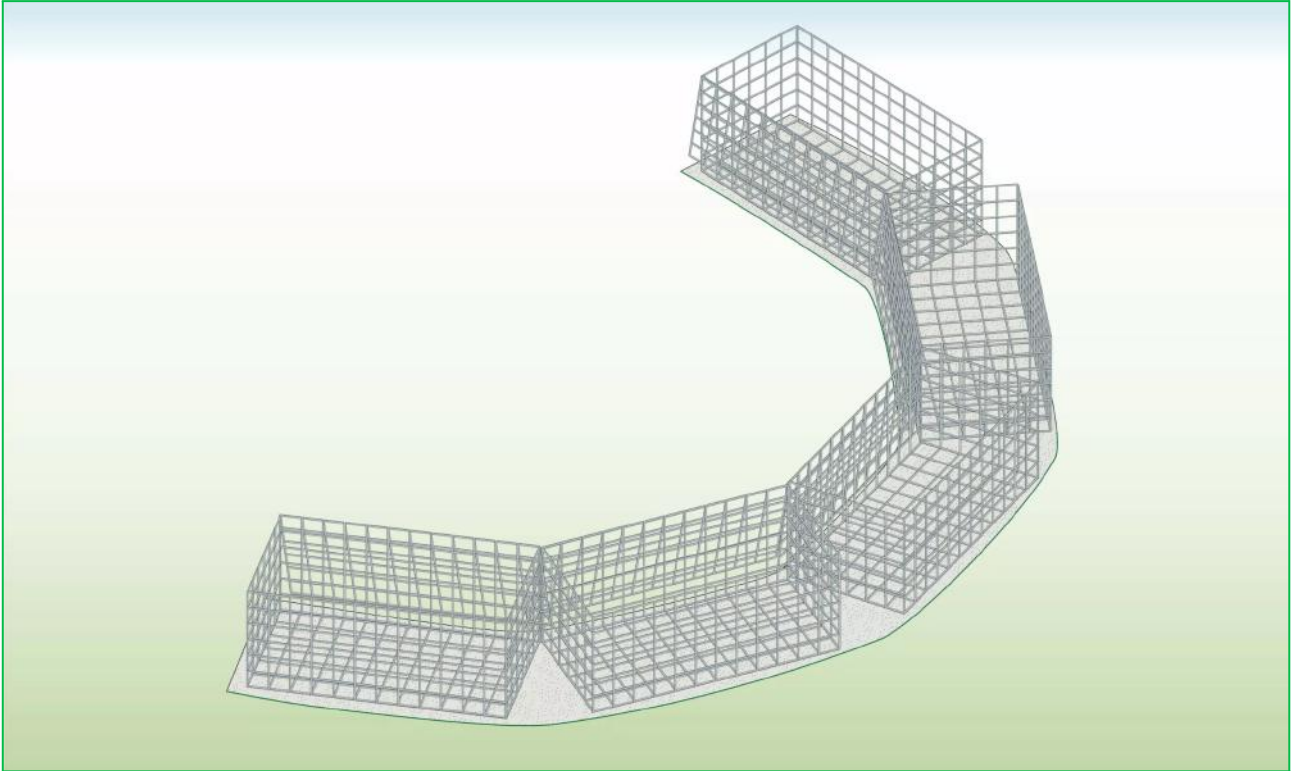
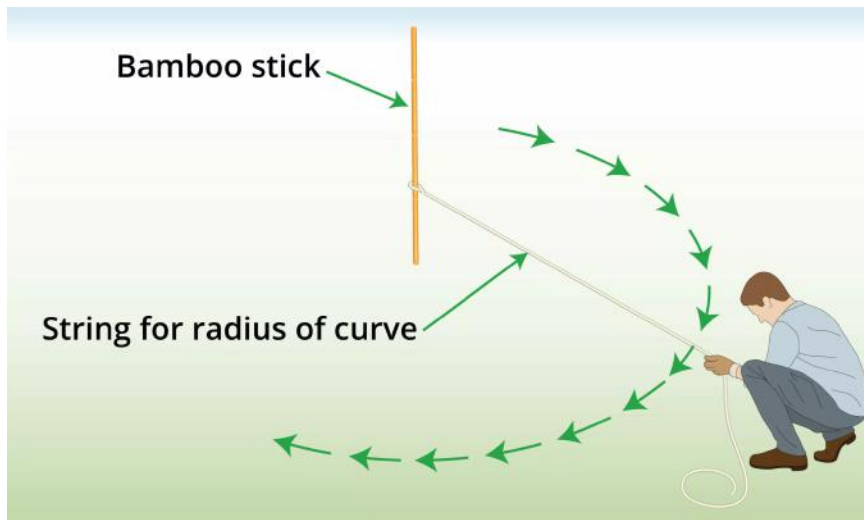


HOW TO INSTALL A CURVED GABION WALL Kit Installation

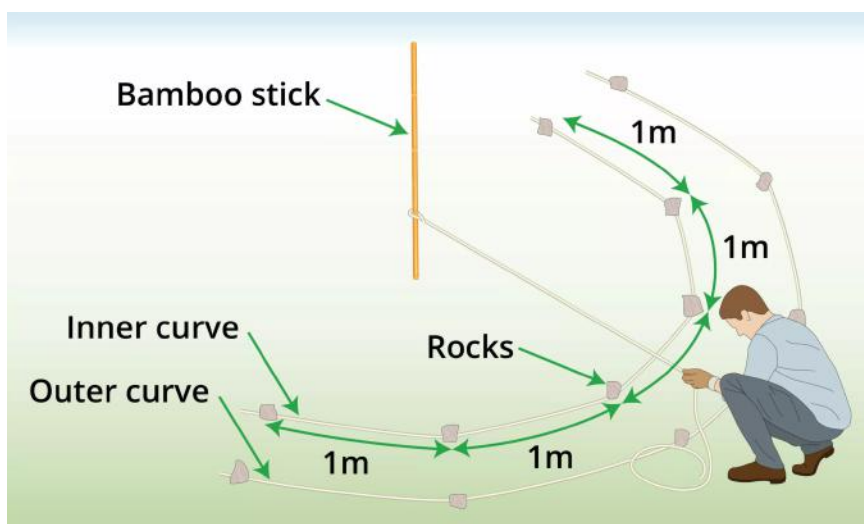


THINGS YOU'LL NEED

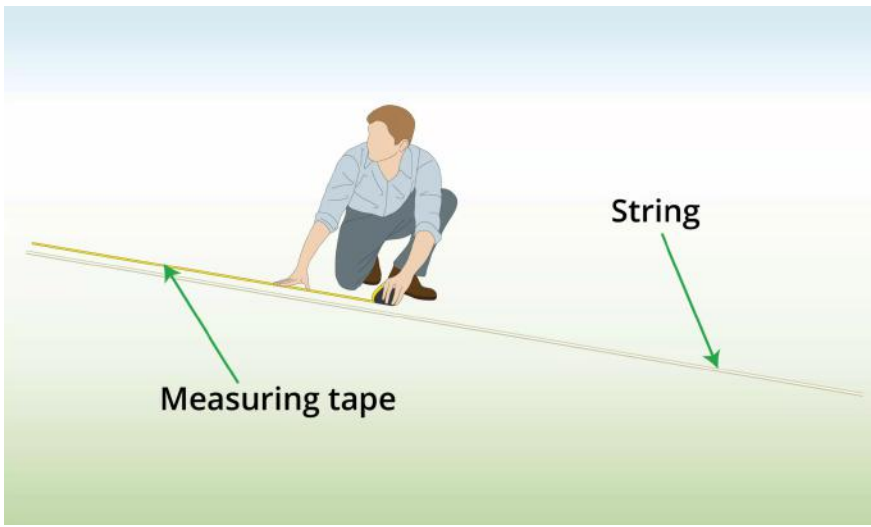
- Shovel
- Spray Paint (optional)
- Gravel
- [Geotextile](#)
- [Gabions](#)
- [Gabion Stone](#)
- [Helicals](#) or [Tying wire](#)
- Trampler

BEFORE ORDERING**Step 1: Walk the Curve**

Attach string to a bamboo stick. Pull the string taut, then walk the string along the area where you would like to create a curved gabion wall.

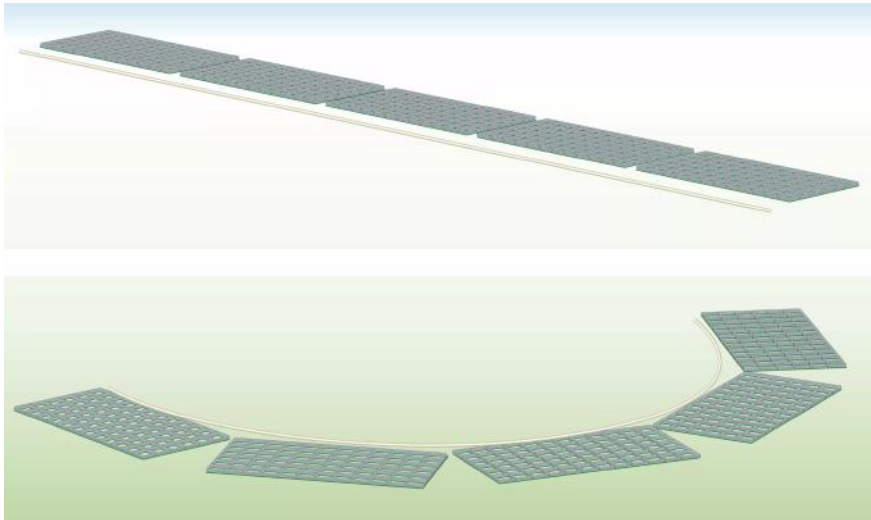
**Step 2: Mark the Curve using String**

Place string along the curve where you plan to install the wall. The string should be placed on the ground and used to mark the inner and outer sides. Hold the string in place at every 1 meter distance using rocks.



Step 3: Measure the String

Lay the string on the ground, then use a measuring tape to record the length of both pieces of string.



Step 4: Order Materials

You will need enough cages to cover the length of your inner curve.

45cm or 97.5cm long cages will give you the best curve effect. Longer cages can also be used but the curve effect will not be as pronounced.

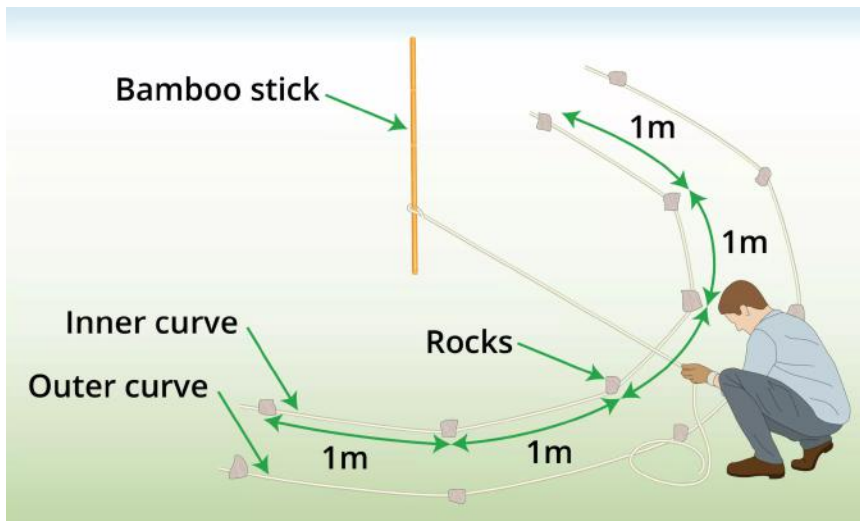
INSTRUCTIONS

Step 1: Mark Area

Mark the area where you plan to install before placing your order.

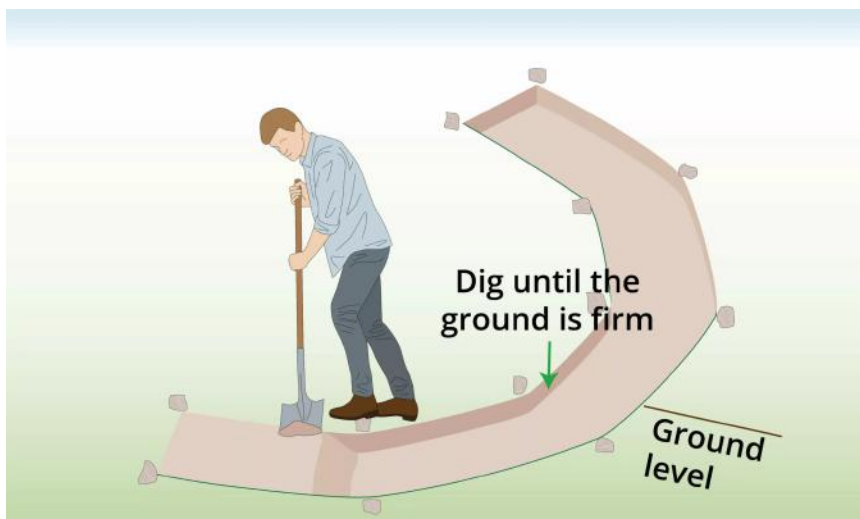
If possible, keep the area marked until your order arrives to ensure the curve shape remains exactly the same.

It is possible to adjust the shape slightly after delivery but if the curve changes significantly you may need to reorder new materials.



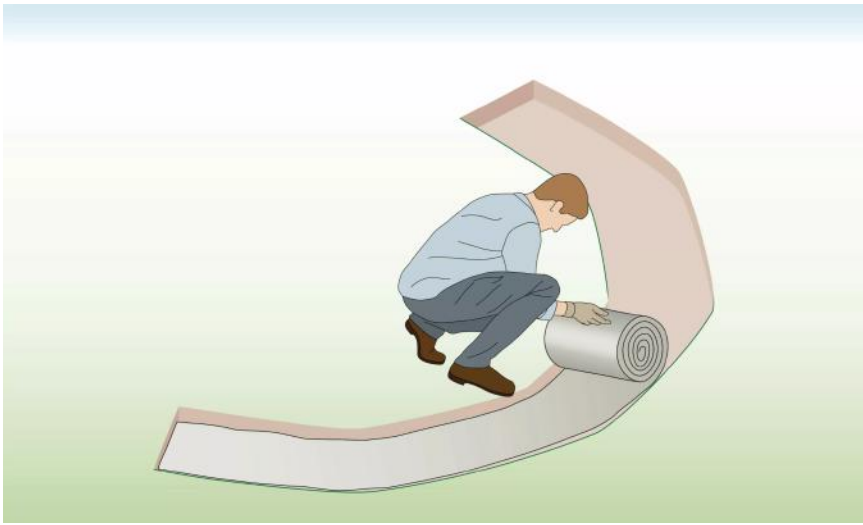
Step 2: Dig

Dig 10cm or until the ground is firm. Gabion walls lower than 1m are often placed directly on the ground but it will be more stable if placed on firm ground such as clay instead of the topsoil.



Step 3: Geotextile

Place a layer of geotextile in the trench to prevent weeds from growing through your structure after installation.



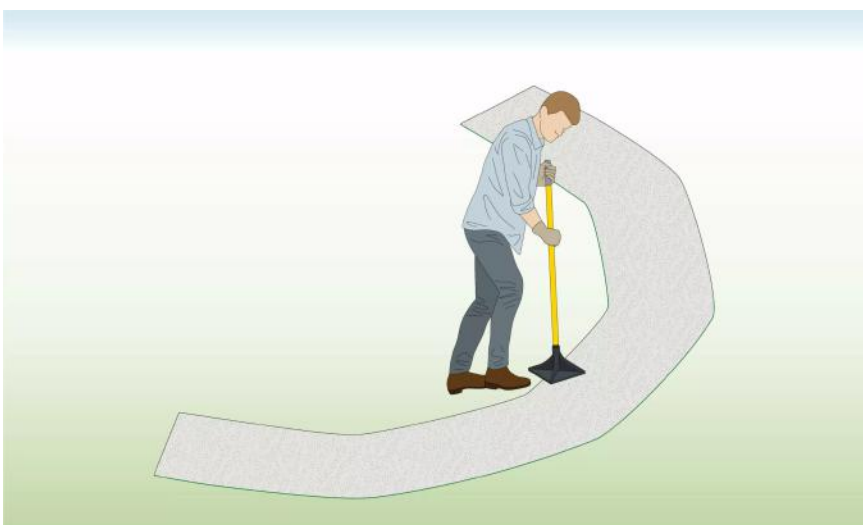
Step 4: Add Gravel or Basecourse

Add a layer of gravel or basecourse on top of the geotextile.



Step 5: Compact Gravel

Walk and stomp on the gravel to make it compact or use a Trampler for bigger jobs.





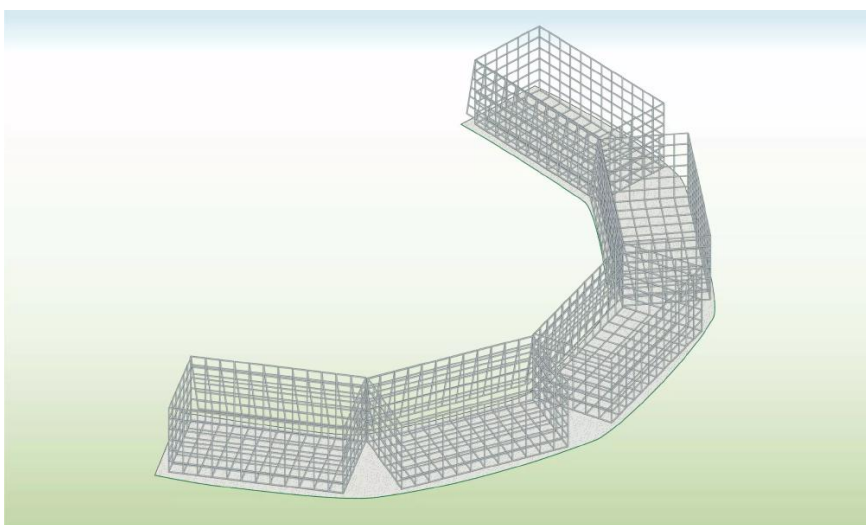
Optional: Concrete Foundation

Most low-level installations do not require a foundation but if you have a large amount of groundwater or the soil is weak, it may be needed.



Step 6: Assemble

[Assemble](#) each of your baskets leaving the lid loose so you can [fill](#) them.



Step 7: Put Into Position

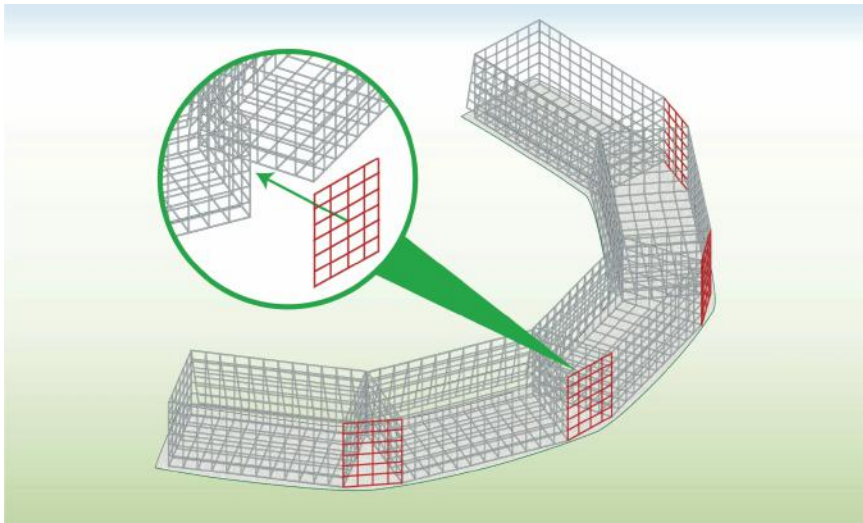
Put them in place ensuring they are in the same position as when you took the measurements.

If the curve shape has changed since measuring, you may need to reorder additional materials.

Step 8: Add Panels

Connect the back using panels.

We always suggest ordering a 1m x 1m spare panel which you can cut to size just in case the curve changes shape slightly.



Step 9: Fill with Rocks

Fill with gabion stone.

